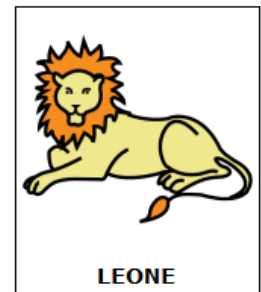
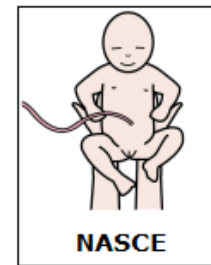
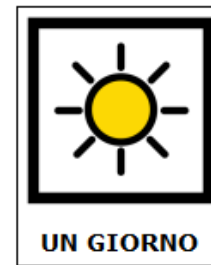
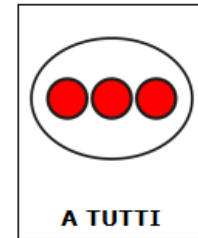
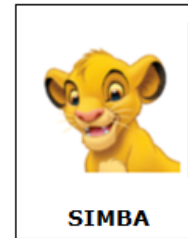


IL RE



LEONE







SIMBA



GIOCA



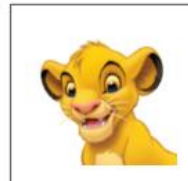
CON NALA



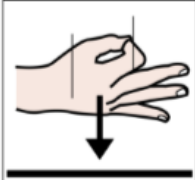
MUFASA



DICE



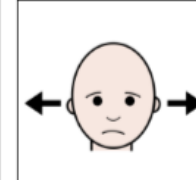
A SIMBA



" DEVI ESSERE



FORTE



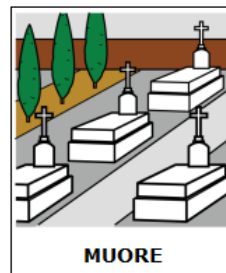
E NON



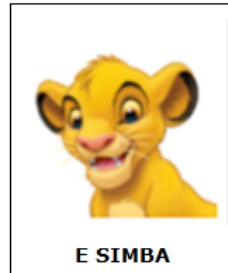
AVER PAURA"



MUFASA



MUORE



E SIMBA



TRISTE





SIMBA



TIMON



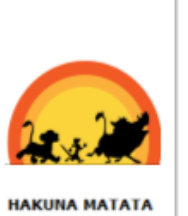
E PUMBA



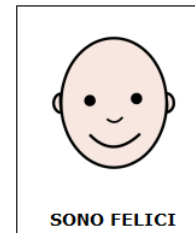
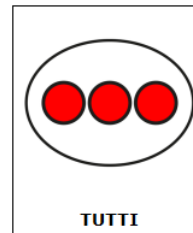
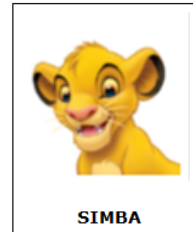
BALLANO

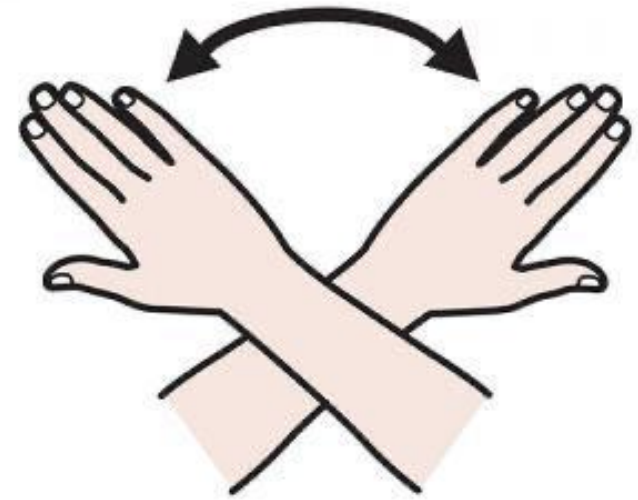


E CANTANO



HAKUNA MATATA





FINE